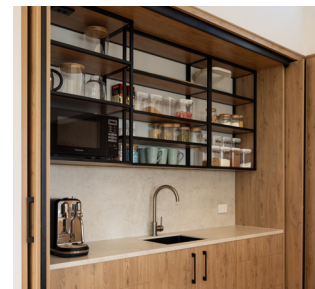
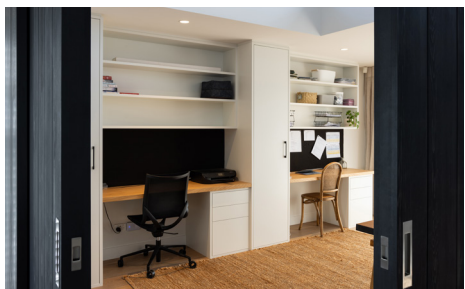


Clifton Road



Joinery

Project
Residential

Location
Clifton Road
Browns Bay

Client
Todd & Katrina Lachlan

Value
\$185k

The only curveball on this residential joinery project was the client's choice for the kitchen of 'Concepta' doors, an innovative form of bifold that can be 'parked away' into cavity pockets when opened. They're ingenious space savers, but an unfamiliar product for the Haydn & Rollett team, who needed to spend some time acquainting themselves to achieve a top-notch finish. The kitchen cabinetry is

all French oak Melteca with a 2mm PVC edge, and the tops and splashback are Dekton. The rest of the project involved a simple laundry, a pair of recessed desks, wardrobes and a French oak Melteca bathroom vanity with stone top. The team also created a covered outdoor BBQ area, using Caesarstone for the benchtop and darkly stained veneer cabinetry that matches the house's cladding.